

RoHS  
Compliant  
2002/95/EC

### SPECIFICATIONS

CURRENT RATING : 1A AC,DC

VOLTAGE RATING : 100V AC,DC

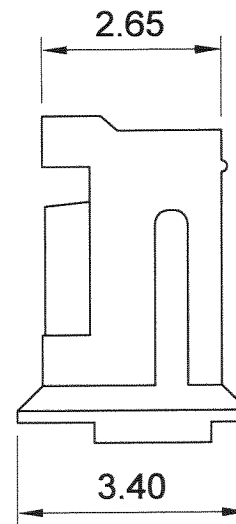
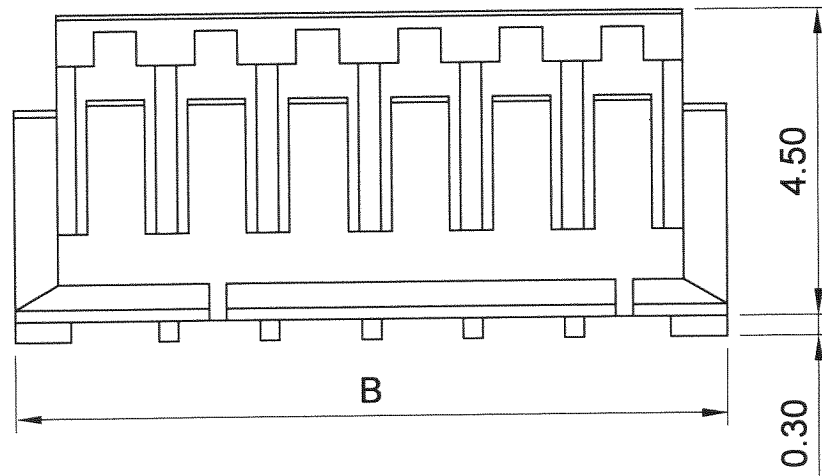
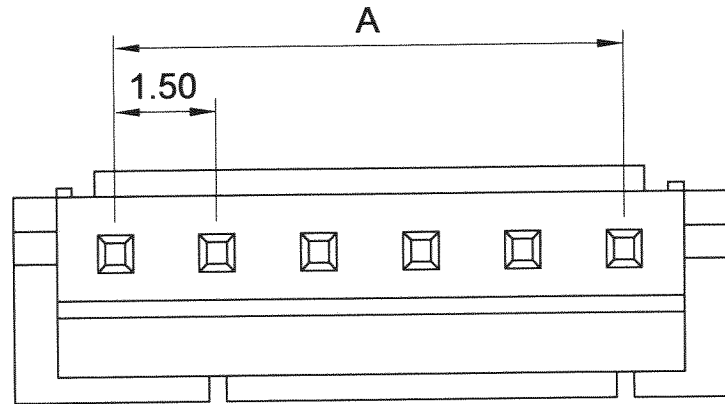
TEMPERATURE RANGE : -25°C TO +85 °C

CONTACT RESISTANCE : 20 mΩ MAX.

INSULATION RESISTANCE : 500 MΩ MIN.

WITHSTANDING VOLTAGE : 500V AC/MINUTE

MATERIAL : NYLON 66, UL 94V-0

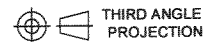


### Ordering Information & Dimensions

Poles	Dimension (mm)	
	A	B
2	1.50	4.50
3	3.00	6.00
4	4.50	7.50
5	6.00	9.00
6	7.50	10.50
7	9.00	12.00
8	10.50	13.50
9	12.00	15.00
10	13.50	16.50
11	15.00	18.00
12	16.50	19.50
13	18.00	21.00

**JAWS** 兆旭股份有限公司  
JAWS CO., LTD.

7F-1, NO.31, Lane 169, Kang Ning Street,  
Hsichih, Taipei Hsien, Taiwan.  
TEL: 886-2-2692-2898  
FAX: 886-2-2692-2618  
Http://www.jaws.com.tw



DESIGN UNITS  
mm INCH

TITLE:  
1.50mm WIRE-TO-BOARD HOUSING

GENERAL TOLERANCES:

DRAWN

游熾瑩

DATE 97/08/14

SIZE:

A4

SCALE:

FREE

SHEET:

1/1

PARTS NO.:

150A-xxP

±0.15

CHECK

郭博峰

DATE 97.8.14

CPN NO.:

DAN NO.: S9708-018

DWG NO.:

JAWS-SOP-150A005

REV.

01

APPROVE

陳世官

DATE 97.8.15